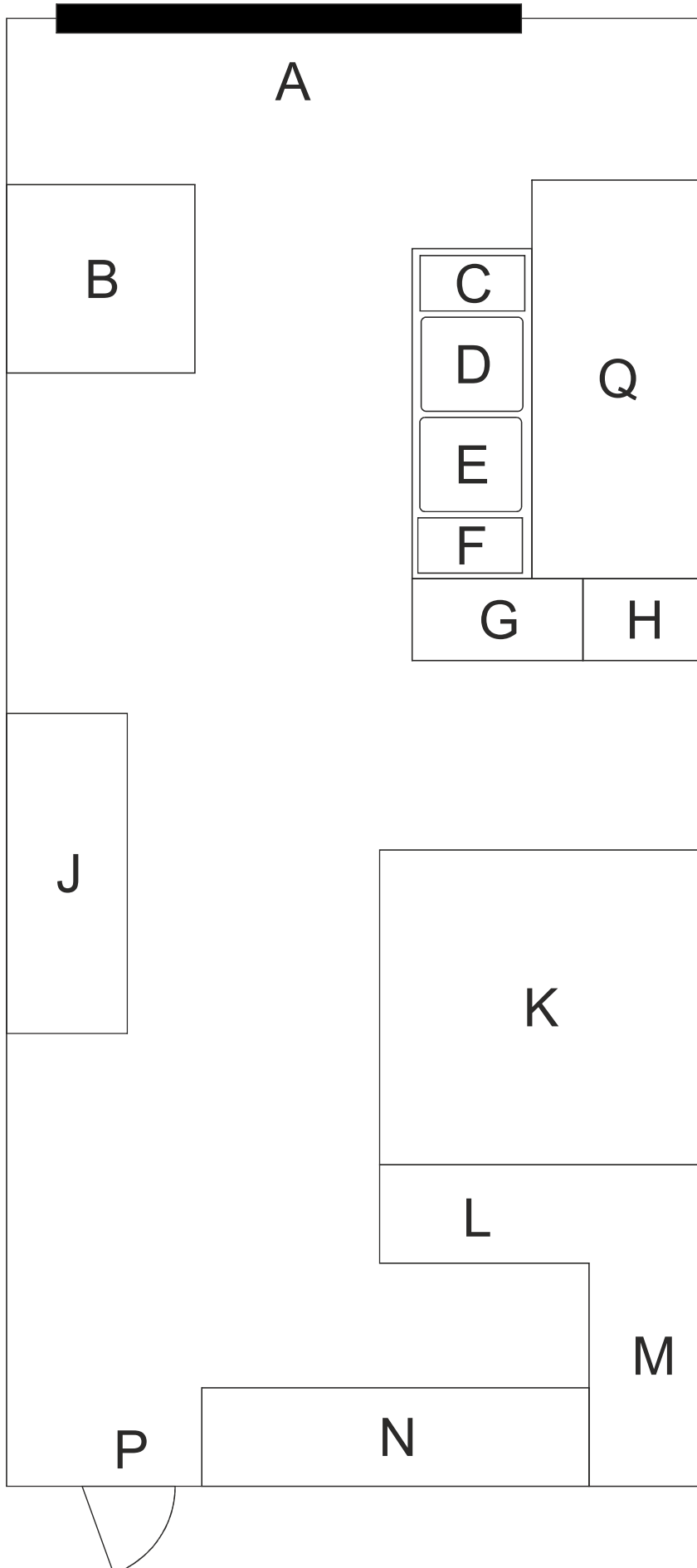


# HuNuHQ Ltd Production Area



A: Roller shutter door

B: Bottle storage area

C: Bottle draining area

D: Botte washing area

E: General washing area

F General draining area

G: Waste station

H: Domestic sink

J: Wine storage area

K: “The Cube”  
Production system

L: Bottle filling area

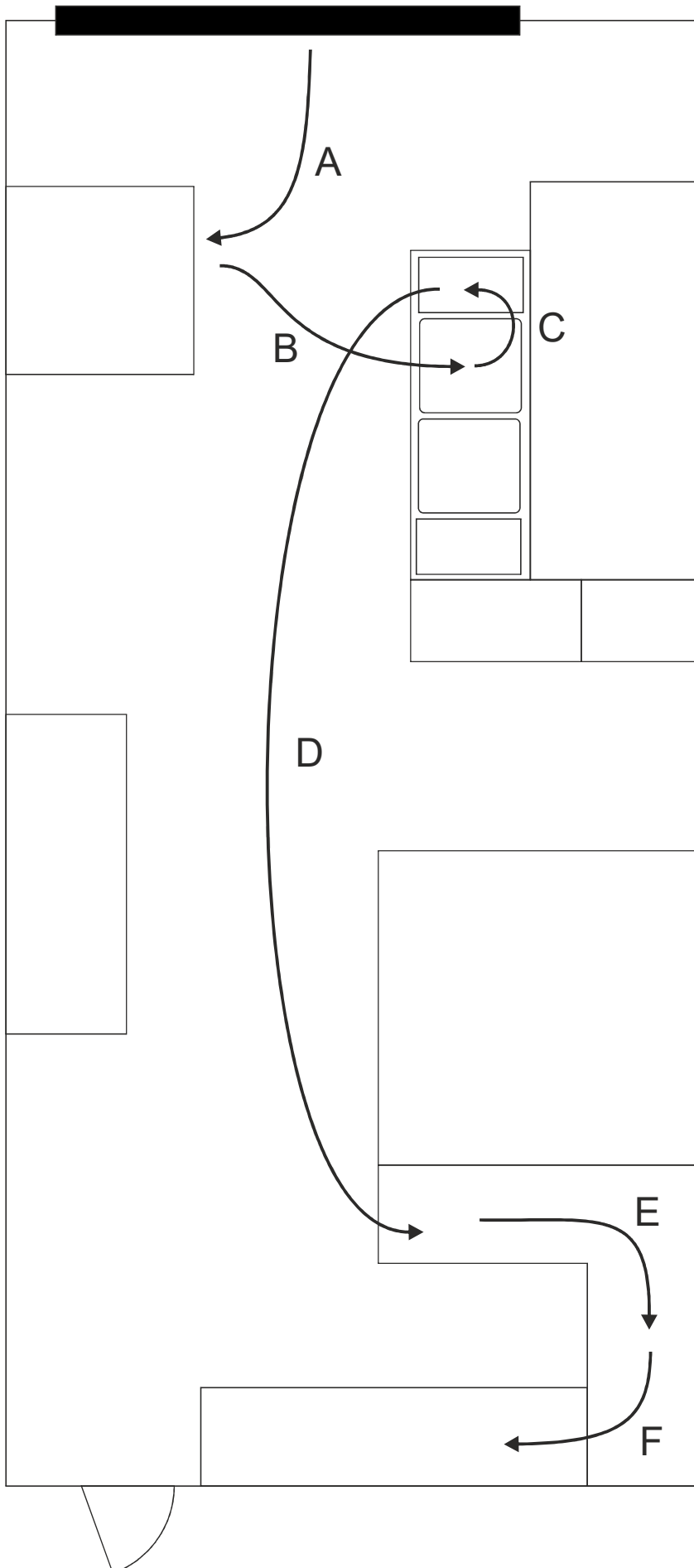
M: Capping &  
Labeling area

N: Packaging area

P: Fire exit

Q: Toilet

# HuNu bottling & distribution flow



- A: Receive bottles from supplier
- B: Install bottles into carrier and place into wash system
- C: Transfer washed bottles to drain
- D: Take washed bottles to filling station
- E: Cap bottles, label with product label & batch label. Package into 12 pack & shrink wrap.
- F: Transfer to distribution area for customer packing and storage.